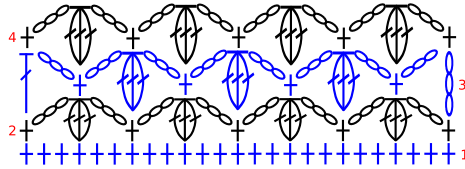
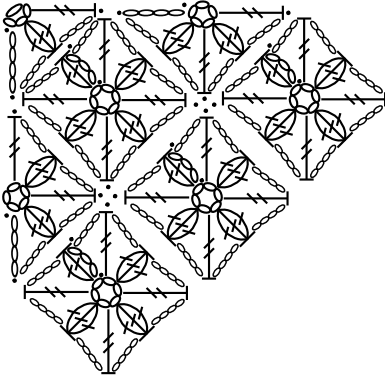


Armhole and Neck Edging

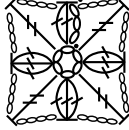


- sl st
- ch
- + sc
- ┆ dc
- ┆ tr
- ⊗ beg Cl
- ⊗ Cl
- ∧ dc2tog

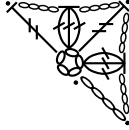
Example of Motif Joining



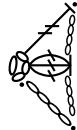
Flower Motif



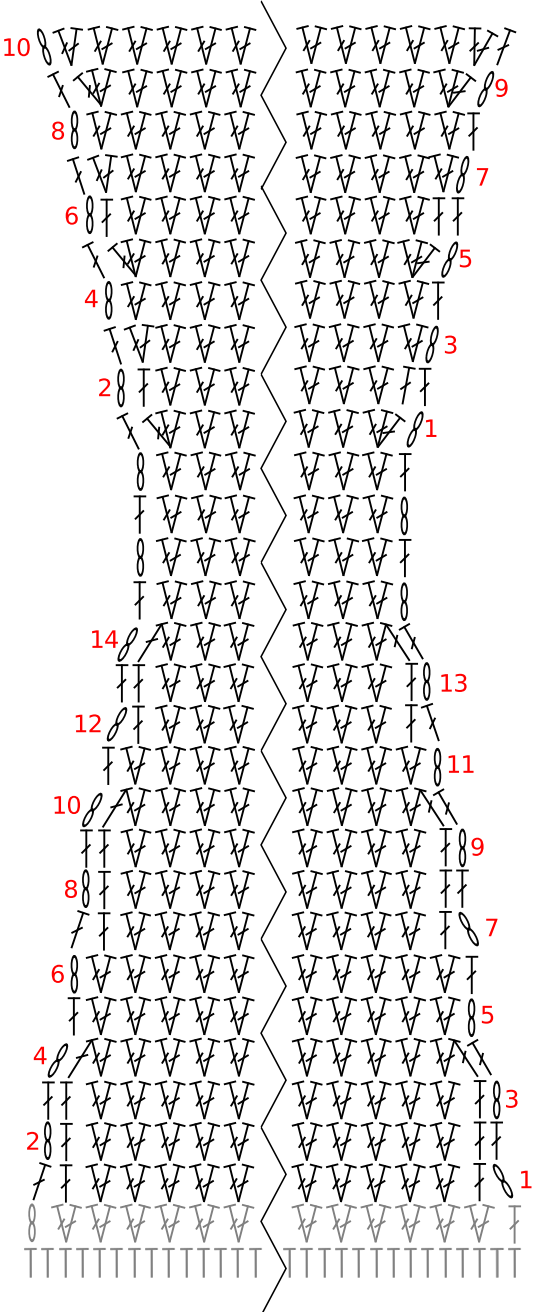
Half Motif



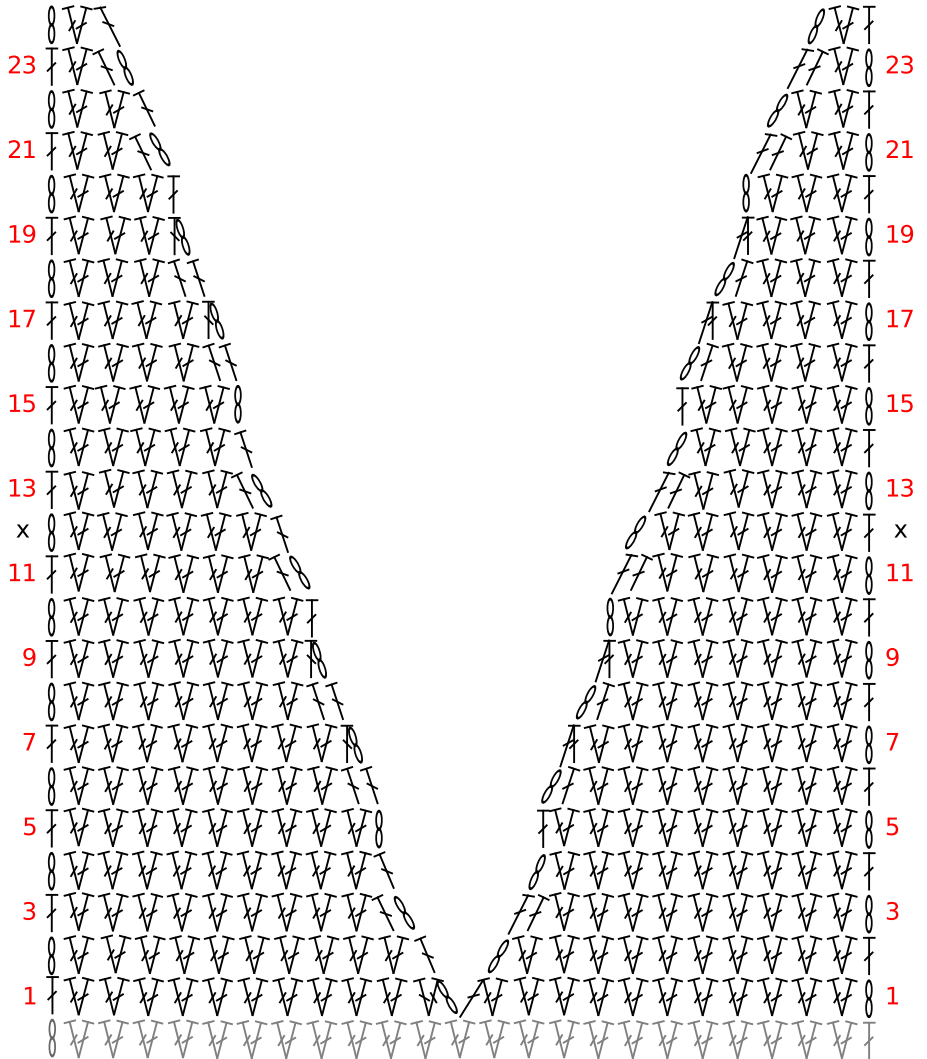
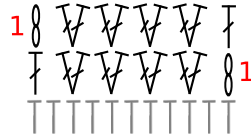
Fourth Motif



Waist Shaping



Split Double Crochet



Right Front Yoke Shaping

Left Front Yoke Shaping